

weldcap[®] series
radical. casual.

optrel[®]
swiss made 



Automatisch besser schweissen

weldcap[®] series

radical. casual.

REVOLUTIONARY COMFORT

The name says it all: the weldcap stands for an auto-darkening welder's cap that combines the comfort of a casual cap with the advantages of a full welding helmet. The combination of plastics and textile is unique. It's soft where it must be comfortable, and robust where you need maximum protection.

The comfortable and easy-to-change textile part is made from flame-retardant material. And it's hygienic: you can simply wash it.

Choose your perfect weldcap[®]!



weldcap[®]
radical. casual.



The heart of this innovative product is the optical filter featuring a well-defined nose cut-out. The lens sits closer to the eyes compared to traditional welding helmets, increasing the welder's line of sight by 2.7 times!



weldcap[®] bump
radical. casual.



While normal autodarkening hoods protect only part of the head, the weldcap[®] bump now completely protects the crown of the head against painful strikes. The bump cap also provides additional stability and a feeling of safety like a full-face helmet, without getting noticeably heavier.

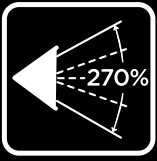


weldcap[®] hard
radical. casual.



Compatible with standard hard hats, the weldcap hard attaches with minimal effort to your industrial helmet. The cap's design accommodates the use of ear muffs.

Comfort, safety, productivity.



EXTENSIVE FIELD OF VIEW

The heart of this innovative product is the optical filter featuring a well-defined nose cut-out. The lens sits closer to the eyes, increasing the welder's line of sight by almost 3 times! By expanding both the lateral and horizontal fields of vision, the welders' performance and safety is increased.



MINIMAL WEIGHT

The optrel weldcap® weighs only 411g / 14.5 oz. and is an absolute lightweight. Since the ADF is closer to the eyes, the weight of the product moves closer to its center of gravity, increasing its stability and balance. The design eliminates pressure points and reduces strain on the welder's neck.



MULTI-PURPOSE USE AT MAXIMUM PROTECTION

Welding: Darkening levels from 9 to 12 cover the majority of welding applications.

Grinding: With its Shade level 3 in inactive mode, the welder has a bright and well-lit view of the work-place. This feature makes the optrel weldcap® perfect for grinding jobs as well.








SWIFT HANDLING

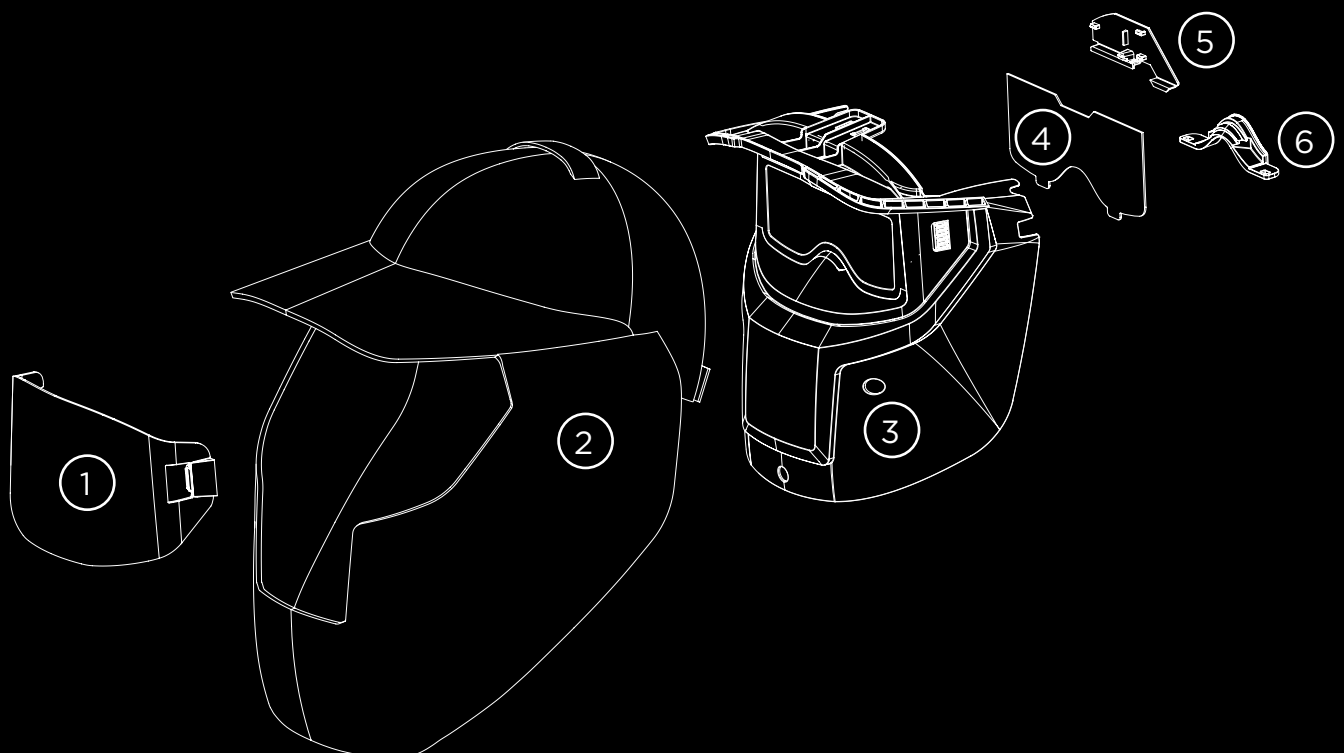
Like a cap; easy to mount and unmount again. Stow it in the optrel parking buddy, when it's not in use.



Parts and accessories

Welding cap		Item no.	Main accessories		Item no.
	weldcap® RC 3/9-12	1008.000		weldcap® starter kit	5002.740
	weldcap® bump RCB 3/9-12	1008.001		optrel Parking Buddy	5002.900
	wedcap® hard RCH 3/9-12	1008.002		optrel bag	9410.043.00

Spare parts and accessories		Item no.
1	Front cover lens weldcap® series (5 pcs.)	5000.260
2a	Spare textile weldcap®	5002.800
2b	Spare textile weldcap® bump	5002.810
2c	Spare textile weldcap® hard	5002.820
3	Spare ADF cartridge weldcap® series	5012.800
4	Inside cover lens weldcap® series (5 pcs.)	5000.040
5	Battery cap weldcap® series (2 pcs.)	5002.720
6	Nose support weldcap® series (2 pcs.)	5002.700





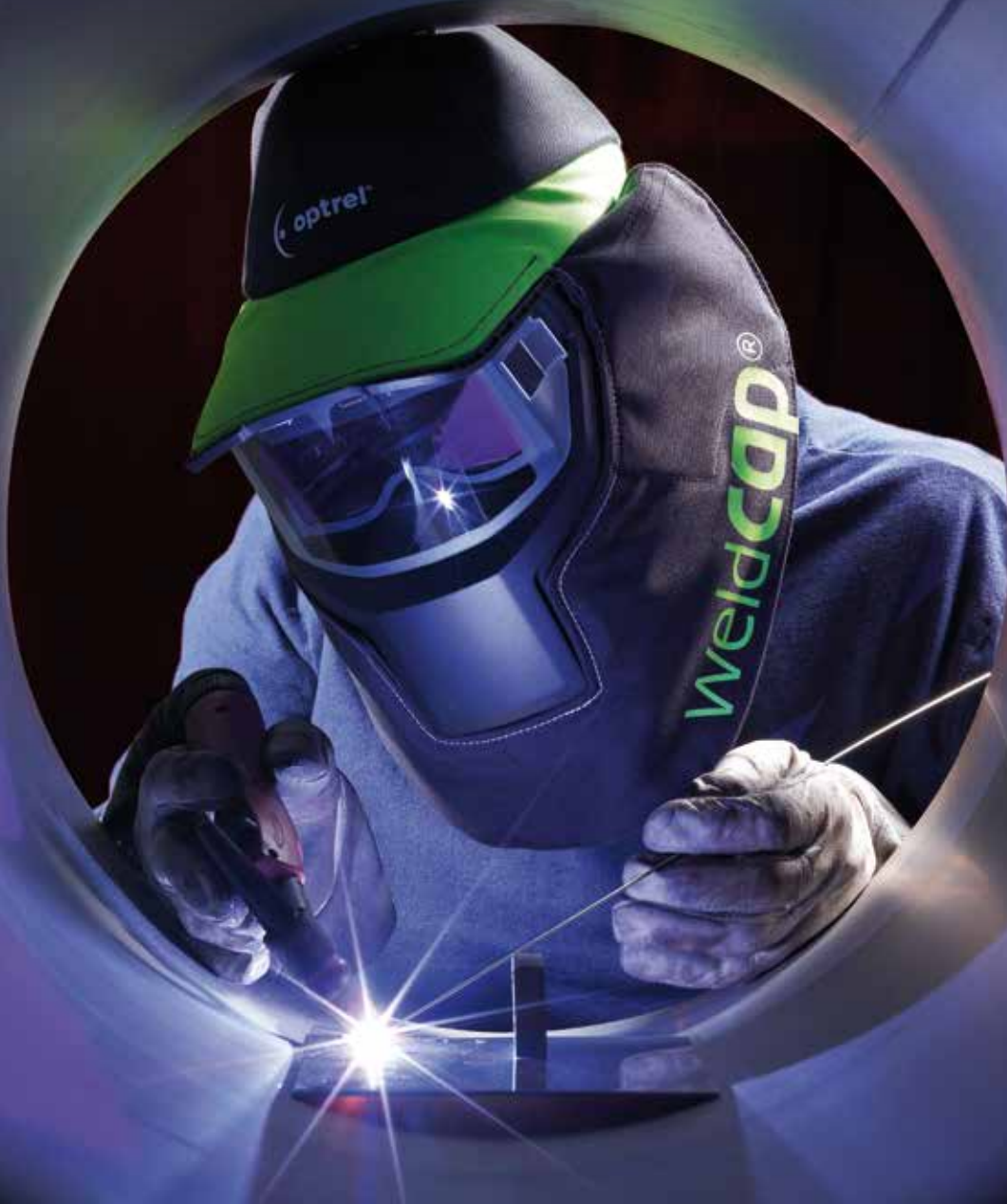
reddot award 2014
winner



TECHNICAL DATA

Description	Lightweight, comfortable welding mask with ADF (infinite shade selection 9-12) and grind mode (Shade Level 3). Compatible with standard hard hats.		Classification	EN175 / AS / NZS 1337.1	weldcap face shield, Class F
Shade levels	Grind mode / inactive: shade level 3 Active: shade levels 9-12		EN 166 / AS / NZS 1337.1		Front cover lens, Class B
Power supply	2 pcs batteries 3V exchangeable (CR2032)		ANSI Z87.1		Impact resistance, Class Z87+
Operating time batteries	1'000h operating time (Standby 10'000h)		Shape stability	Welding mask: up to 180 °C / 356 °F Front cover lens: up to 135 °C / 275 °F	
Sensors	Wide detection sensor		Eye protection	Ultraviolet / Infrared Protection: maximum protection at any shade level	
Switching time	Light to dark: 0.16 ms at room temperature 0.11 ms at 55°C / 131°F Dark to light: 0.3 s		Operating temperature	-10 °C to +60 °C / 14 °F to 140 °F	
Viewing area	Improved wide viewing area due to nose cut-out.		Storage temperature	-20°C bis + 80°C / -4°F bis 176°F	
Classification EN379	Optical class:	1	Weight	appr. 400g	
	Diffusion of light class:	1	Application ranges	Any electric arc welding process Electrode Welding (Stick Welding, SMAW) / MIG / MAG (GMAW) / GMAW High melting rate process / Flux Cored Wire Welding / TIG welding (GTAW) / Plasma Arc Welding / Micro Plasma Arc Welding / Plasmacutting / Grinding. <i>Prohibited for laser welding!</i>	
	Variations in luminous transmittance class:	2	Standards	CE (EN 379, EN 166, EN 175) ANSI Z87.1, AS/NZS 1337/1338	
	Angle dependence of luminous transmittance class:	2	Warranty	2 years (except textile and batteries)	
Classification (textile)					
EN ISO 11611	Class 1				
EN ISO 11612	Class A/B/C1/E3/F1				

Welding has never been so comfortable.
Join the revolution.



Your optrel partner:



optrel AG
industriestrasse 2
CH-9630 wattwil
switzerland
www.optrel.com
info@optrel.com

optrel.com

